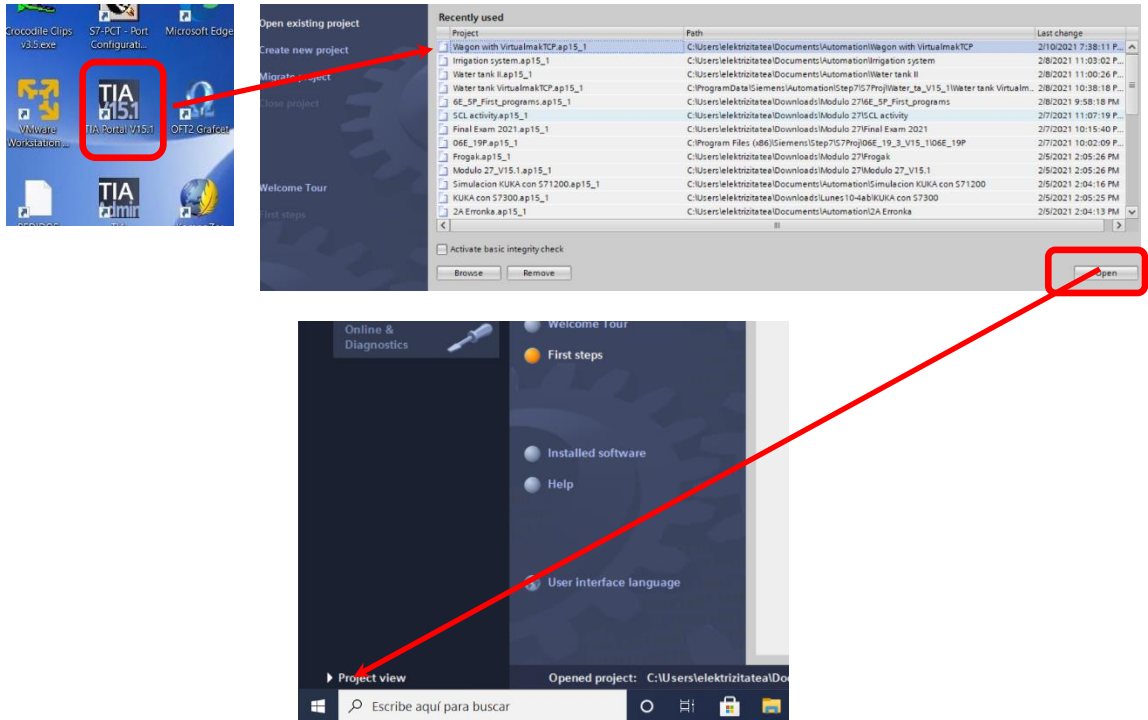


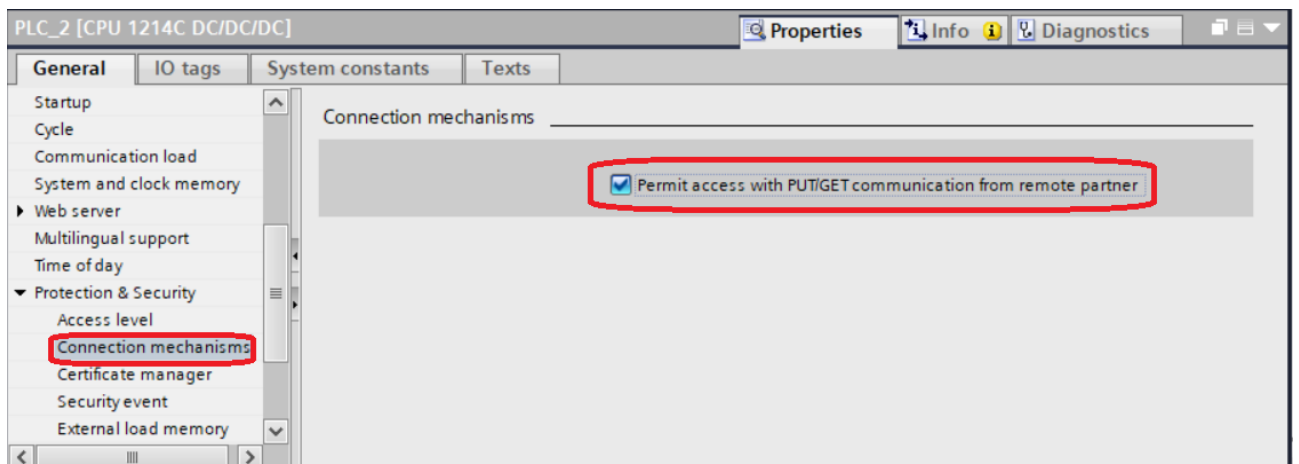
VIRTUALMAKTCP USER GUIDE

The aim of this guide is to use the VirtualmakTCP simulation software with the Siemens PLCSIM simulator.

1. Open the TIA PORTAL project..



2. In our TIA PORTAL project, we have already defined a Hardware Configuration. If we are using a S71200 or S71500 series PLC, we must allow communication between the PLC and other devices such as HMI panels, simulation software or other devices. For this, we must allow PUT/GET communications:



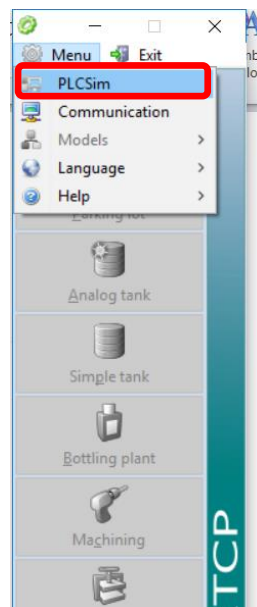


3. We click on VirtualmakTCP icon to start the program:

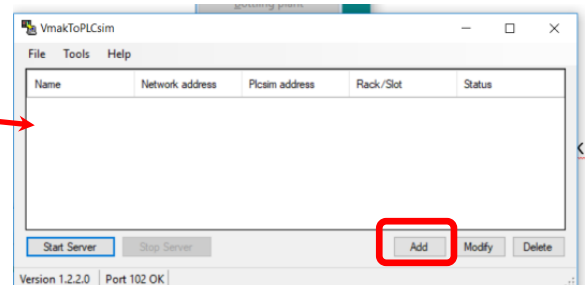
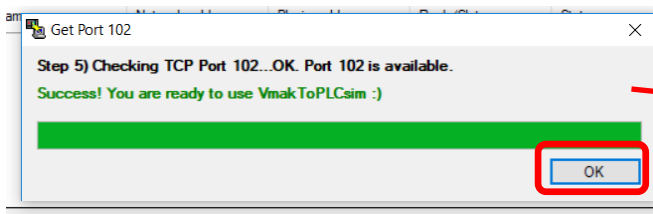


Double click here

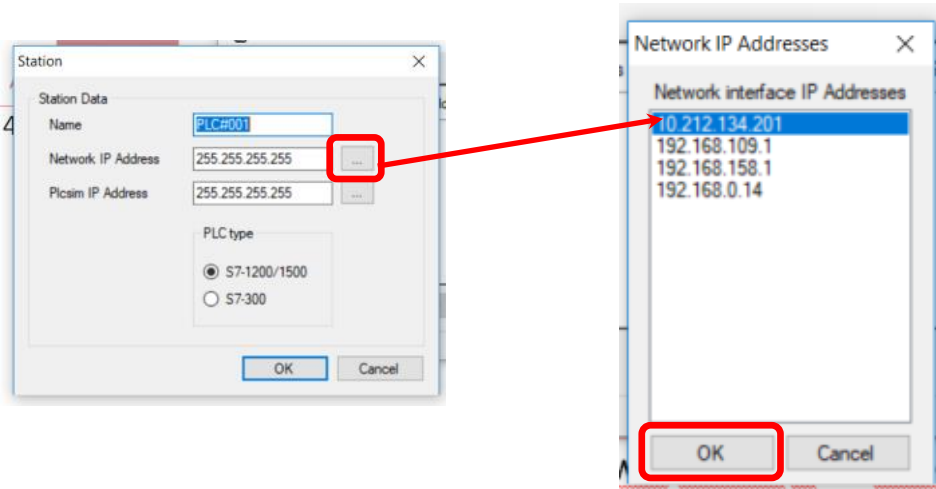
4. We select the option PLCSim in the Menu:



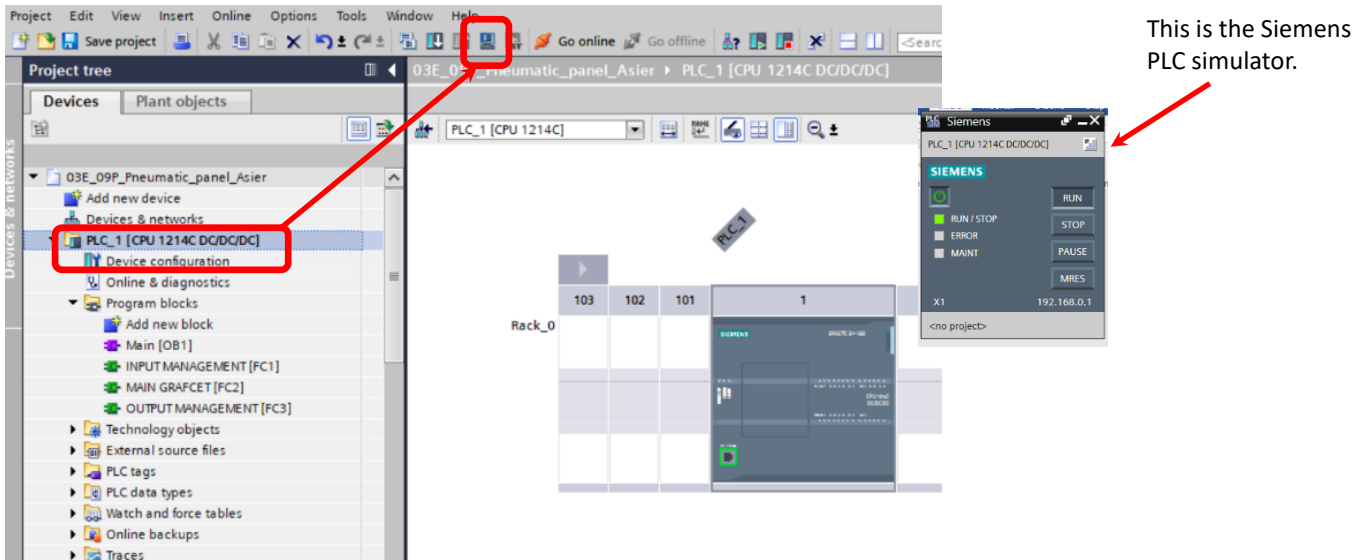
5. The following window will be opened. Then we click OK and we will click on the “Add” button.



6. Our PC has an IP address, and we will select it as shown in the images below. In this example, we select the IP address 10.212.134.201. There can be more than one IP addresses available. If there is none, make sure that your PC is connected to a cable or



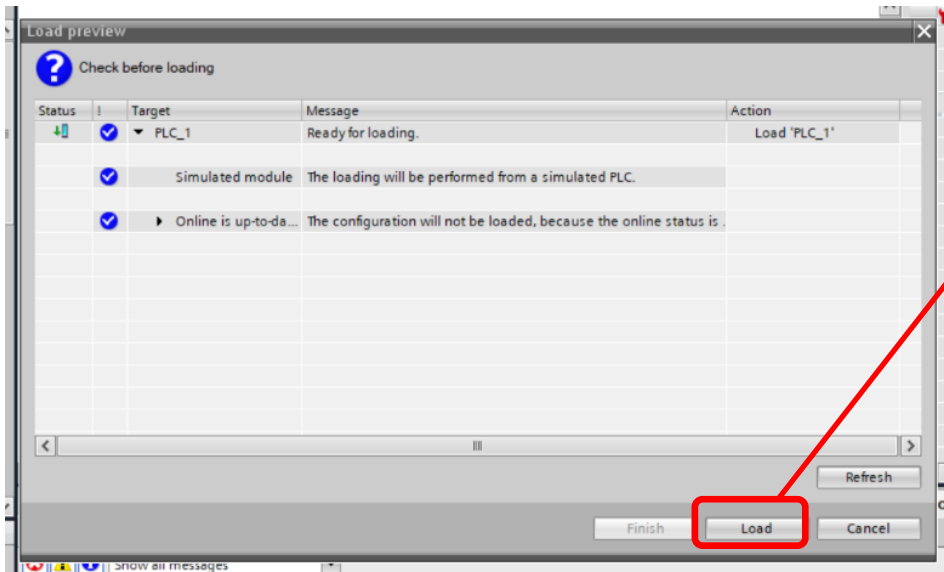
7. At this point, and not before, we start the PLCSIM simulator:



When we use VirtualmakTCP it's better to use the Compact View of the PLCSim

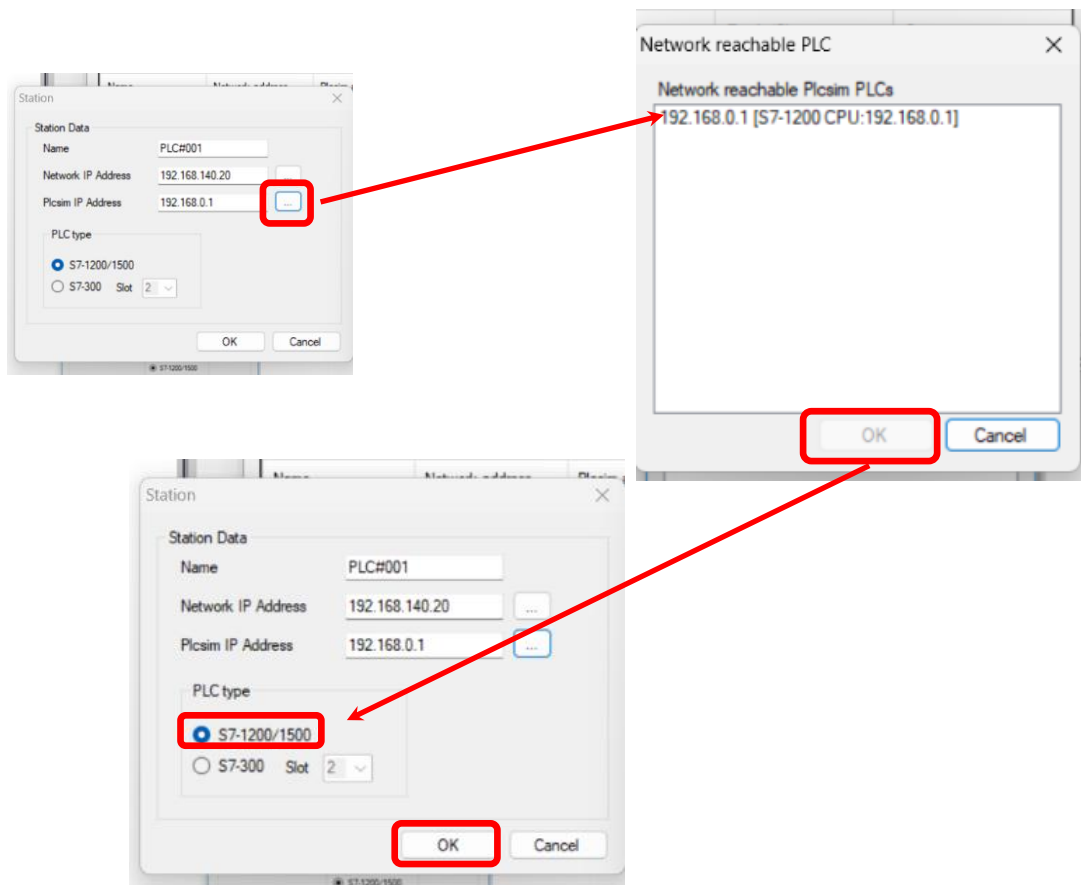


8. Now we download our project to the PLC simulator:



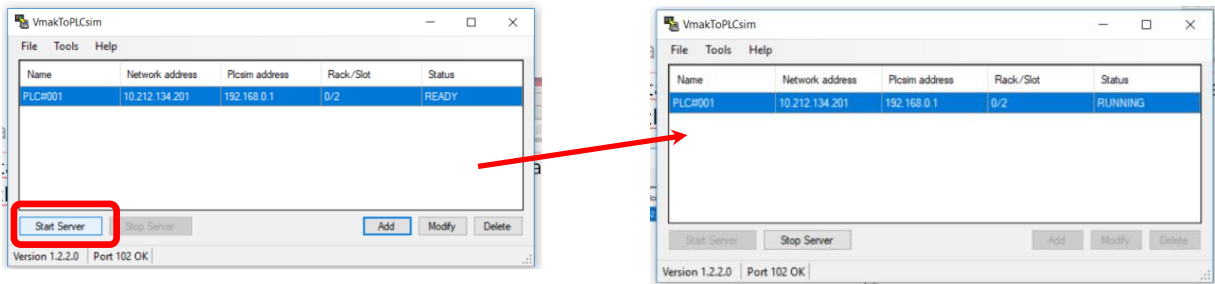
When we download the project, some messages will appear. Read carefully the messages and click on the correct option. After downloading, we can change the simulated PLC to the RUN-P state.

9. Back to the VirtualmakTCP software, now we select the PLC simulator that is already running. We will close the window after selecting the S7-1200 option and clicking the OK button:

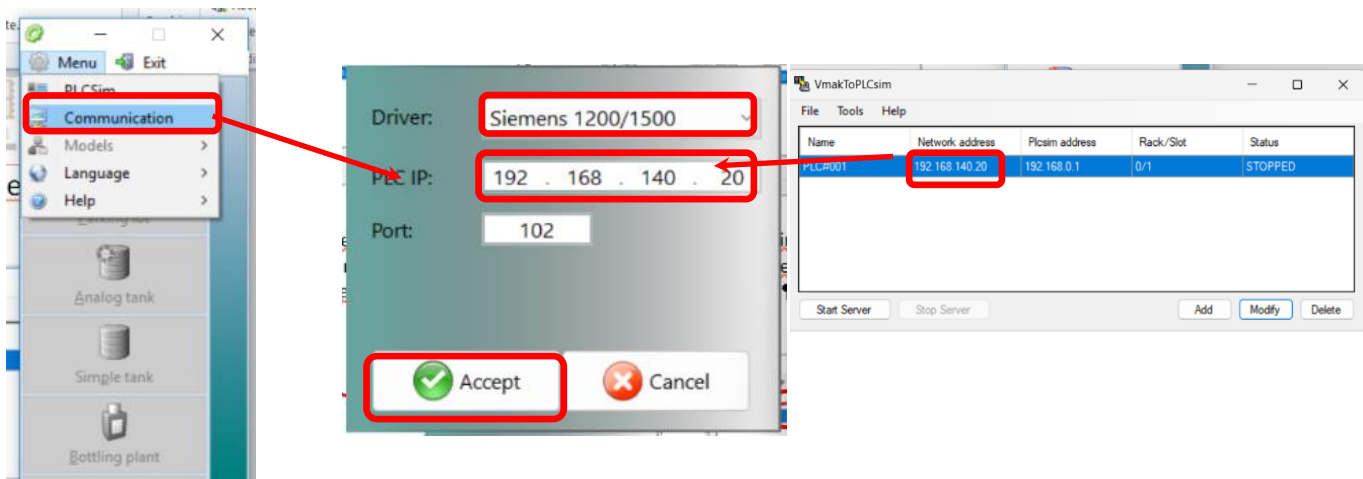




10. Now we will start the server so that the VirtualmakTCP simulation software will be able to connect with the Siemens PLCsim:



11. Now we are able to connect the VirtualmakTCP software with the simulated PLC. We have to select the Siemens 1200 option, and we have to type the IP address of our PC (we will find it in the interface where we started de communication server):



12. Now we can choose different virtual automatic systems. As an example, we will select the Wagon:

